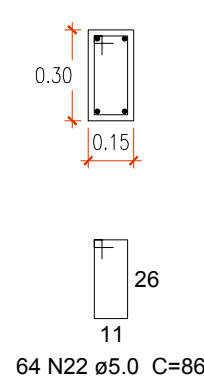
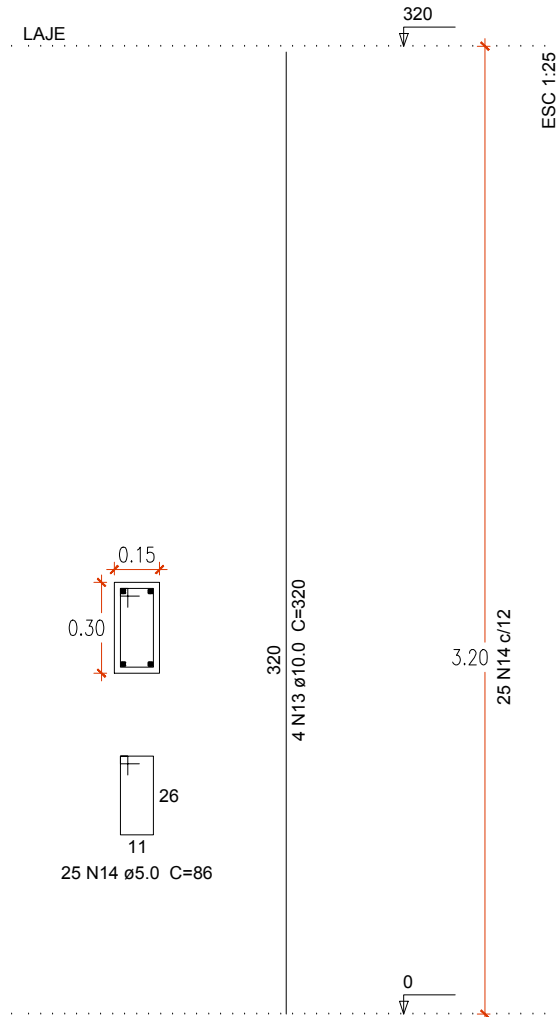
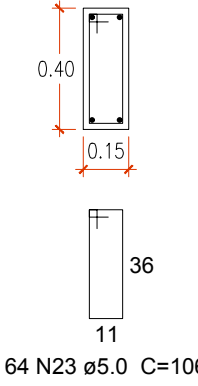


27 VIGAS E LAJES 1:75

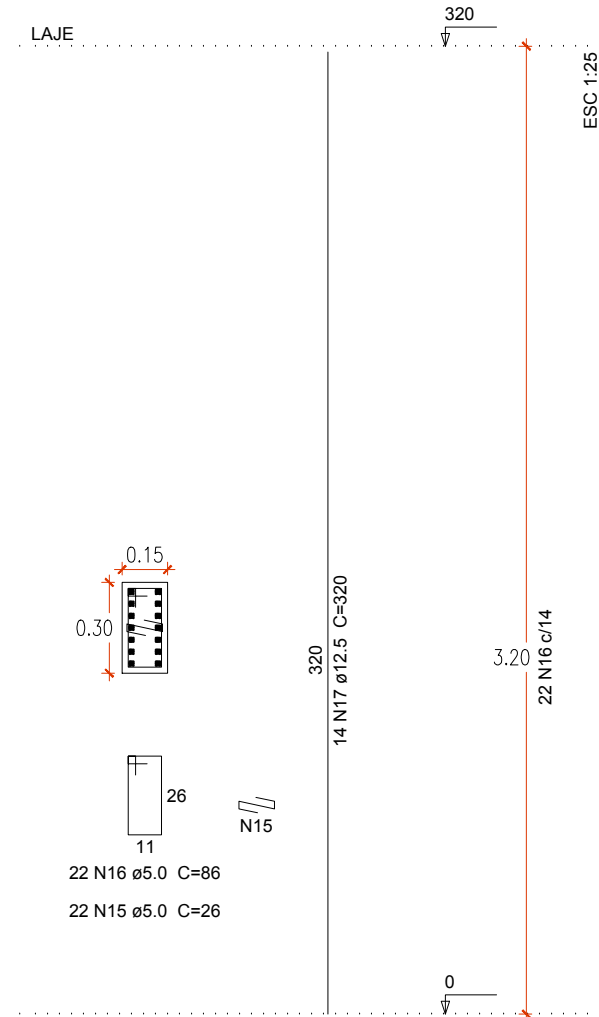
SEÇÃO VIGAS ESC 1:25



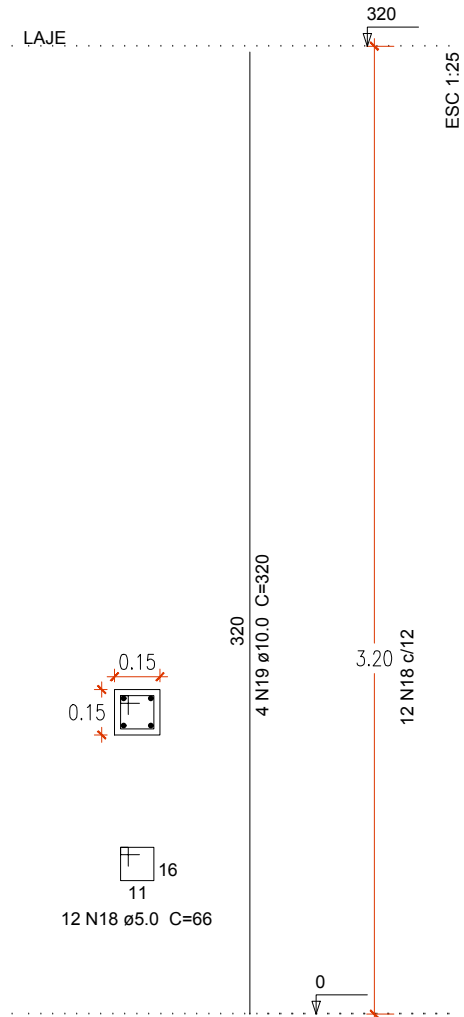
SEÇÃO VIGAS ESC 1:25



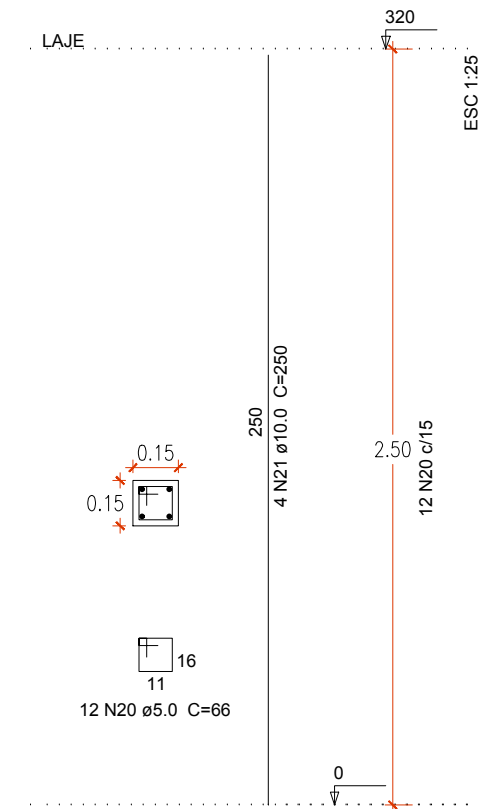
P1, P2, P3, P4, P5, P6, P7, P8, P9, P10, P12, P13, P14, P19, P20, P21, P22, P23 e P24



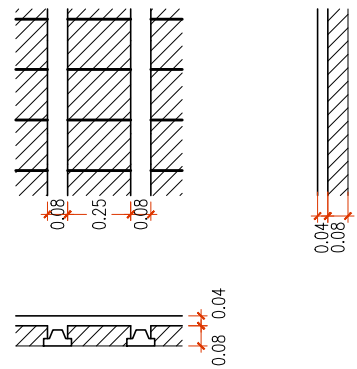
P15, P16, P17, e P18



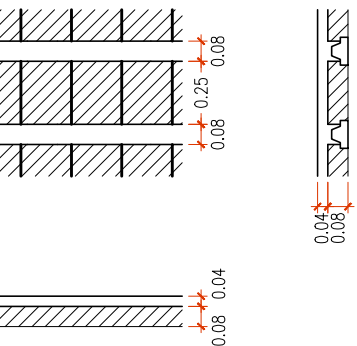
P11



Detalhe 1 (esc. 1:30)



Detalhe 2 (esc. 1:30)



RESP. TÉCNICO	ARQ. ANA CAROLINA REFOSCO	RUA SANTA CRUZ Nº1100 - CENTRO - PAIM FILHO-RS	PROPRIETÁRIO	PREFEITURA MUNICIPAL DE PAIM FILHO	DATA	26/05/25
ENDEREÇO	RUA 8 DE MARÇO, PAIM FILHO-RS	MUNICÍPIO DE PAIM FILHO	PROJETO	AMPLIAÇÃO ESCOLA M. IRMÃ MARIA ANASTASIE - REFEITÓRIO	PRANCHA	INDICADA
PRANCHA	PROJETO ESTRUTURAL	Nº PRANCHA	09	ESCALA		